

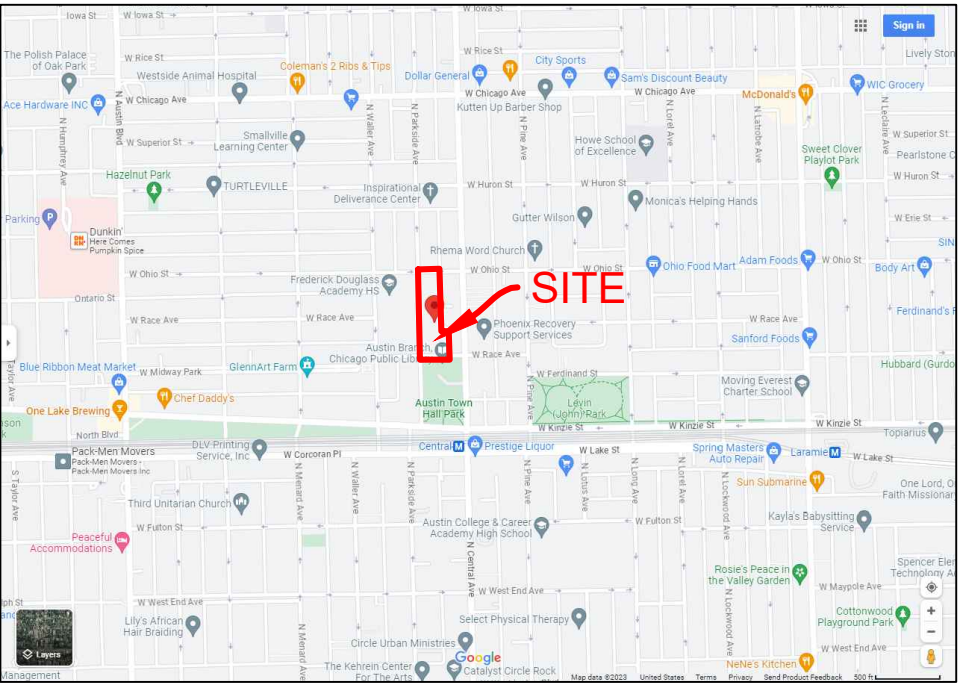
ALTA/NSPS LAND TITLE SURVEY

OF
 LOTS 2 TO 12, AND VACATED ALLEY IN BLOCK 2 IN AUSTINVILLE, BEING AUSTIN AND MERRICK'S SUBDIVISION OF THE EAST HALF OF THE
 NORTHEAST QUARTER OF SECTION 8, TOWNSHIP 39 NORTH, RANGE 13, EAST OF THE THIRD PRINCIPAL MERIDIAN, IN COOK COUNTY, ILLINOIS.

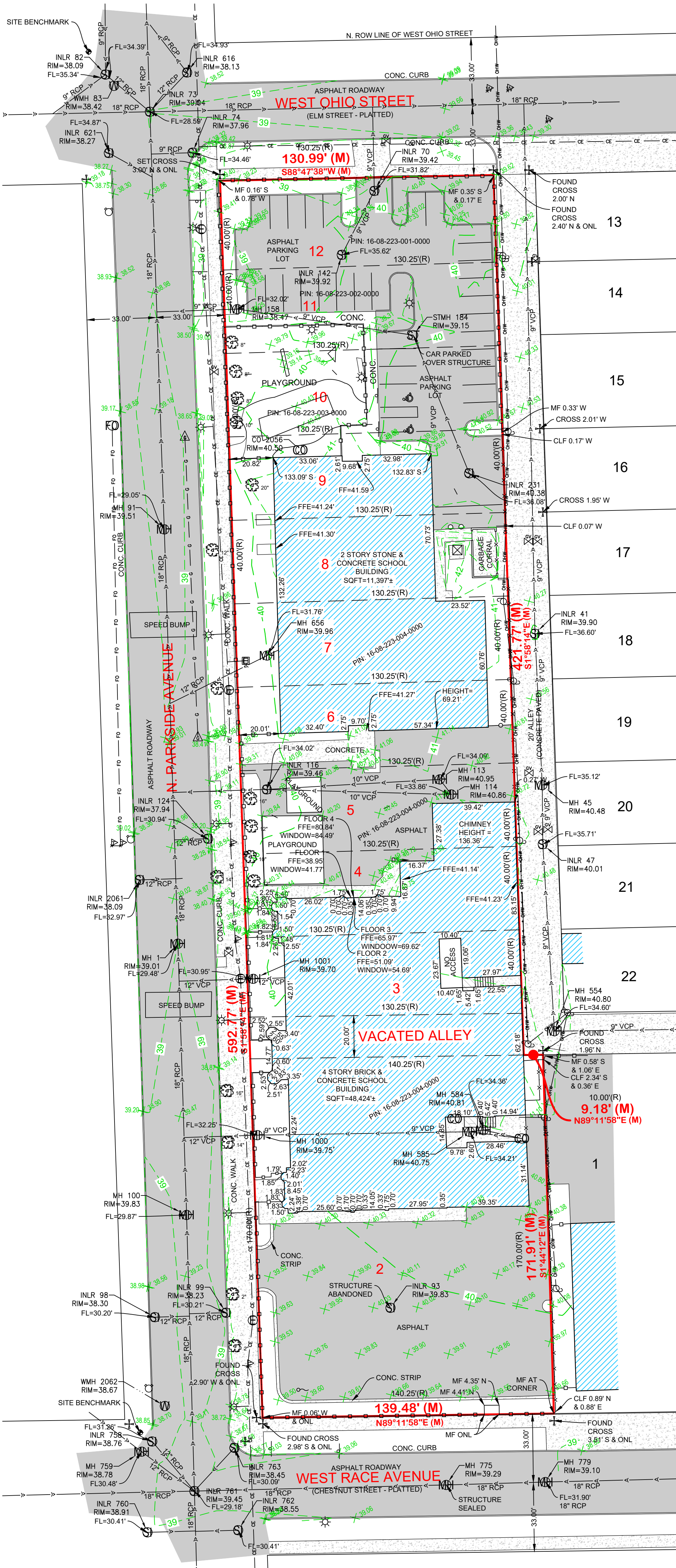


0' 30' 60'
 SCALE: 1" = 30'

VICINITY MAP (NOT TO SCALE)



PERMANENT TAX ID NUMBERS:
 16-08-223-001
 16-08-223-002
 16-08-223-003
 16-08-223-004



LEGEND

(R=M)	RECORD = MEASURED DIMENSION	(M)	MANHOLE (UNMARKED)
(M)	MEASURED DIMENSION	(C)	COMBINATION MANHOLE
(R)	RECORD DIMENSION	(S)	SANITARY MANHOLE
(D)	DEED DIMENSION	(SC)	SANITARY CLEANOUT
(CH)	CHORD DIMENSION	(LS)	LIFT STATION
(LE)	LANDSCAPE EASEMENT	(CB)	CATCH BASIN
(VEU)	VILLAGE UTILITY EASEMENT	(SI)	STORM INLET (ROUND)
(CEUC)	CITY UTILITY EASEMENT	(SIQ)	STORM INLET (SQUARE)
(PUE)	PUBLIC UTILITY EASEMENT	(SIB)	STORM INLET (BEEHIVE)
(PUDE)	PUBLIC UTILITY & DRAINAGE EASEMENT	(C)	CURB INLET
(BSL)	BUILDING SETBACK LINE	(FES)	FLARED END SECTION
(PC)	POINT OF CURVATURE	(D)	DOWNSPOUT (INTO GROUND)
(PT)	POINT OF TANGENCY	(WV)	WATER VALVE VAULT
(OH)	OVERHANG	(FH)	FIRE HYDRANT
(L)	ARC LENGTH	(WV6)	WATER VALVE VAULT
(R)	RADIUS	(WV7)	WATER VALVE VAULT
(ONL)	ON LINE	(WV8)	WATER VALVE VAULT
(PBL)	POINT OF BEGINNING	(WV9)	WATER VALVE VAULT
(POC)	POINT OF COMMENCEMENT	(WV10)	WATER VALVE VAULT
(TYP)	TYPICAL	(WV11)	WATER VALVE VAULT
(CLF)	CHAIN LINK FENCE	(WV12)	WATER VALVE VAULT
(WF)	WOOD FENCE	(WV13)	WATER VALVE VAULT
(MF)	IRON METAL FENCE	(WV14)	WATER VALVE VAULT
(PF)	PLASTIC/VINYL FENCE	(WV15)	WATER VALVE VAULT
(WRF)	WIRE FENCE	(WV16)	WATER VALVE VAULT
(FIP)	FOUND IRON PIPE (FIP #)	(WV17)	WATER VALVE VAULT
(FIR)	FOUND IRON ROD (FIR #)	(WV18)	WATER VALVE VAULT
(SIR)	SET IRON ROD (SIR #)	(WV19)	WATER VALVE VAULT
(CFC)	CUT/FOUND CROSS	(WV20)	WATER VALVE VAULT
(CFCN)	CUT/FOUND NOTCH	(WV21)	WATER VALVE VAULT
(FMAG)	FOUND MAG NAIL (FMAG)	(WV22)	WATER VALVE VAULT
(SMAG)	SET MAG NAIL (SMAG)	(WV23)	WATER VALVE VAULT
(CMF)	CONCRETE MONUMENT FOUND	(WV24)	WATER VALVE VAULT
(FA)	FOUND AXLE	(WV25)	WATER VALVE VAULT
(FAS)	FOUND RAILROAD SPIKE	(WV26)	WATER VALVE VAULT
(RWP)	RIGHT OF WAY REFERENCE POINT	(WV27)	WATER VALVE VAULT
(B)	BUILDING	(WV28)	WATER VALVE VAULT
(C)	CONCRETE	(WV29)	WATER VALVE VAULT
(A)	ASPHALT	(WV30)	WATER VALVE VAULT
(W)	WOOD	(WV31)	WATER VALVE VAULT
(BR)	BRICK	(WV32)	WATER VALVE VAULT
(G)	GRAVEL	(WV33)	WATER VALVE VAULT
(S)	STONE	(WV34)	WATER VALVE VAULT
(O)	OVERHANG	(WV35)	WATER VALVE VAULT
(AD)	ADDITION	(WV36)	WATER VALVE VAULT
(CT)	CONIFEROUS TREE (TRUNK DIAMETER)	(WV37)	WATER VALVE VAULT
(DT)	DECIDUOUS TREE (TRUNK DIAMETER)	(WV38)	WATER VALVE VAULT
(S)	SHRUB (SIZE)	(WV39)	WATER VALVE VAULT
(B)	BENCHMARK	(WV40)	WATER VALVE VAULT
(P)	PARKING METER	(WV41)	WATER VALVE VAULT
(M)	MONITORING WELL	(WV42)	WATER VALVE VAULT
(H)	HANDICAP SYMBOL	(WV43)	WATER VALVE VAULT
(L)	LIGHT STANDARD WIMST ARM	(WV44)	WATER VALVE VAULT
(E)	ELECTRIC METER	(WV45)	WATER VALVE VAULT
(S)	STREET LIGHT HAND HOLE	(WV46)	WATER VALVE VAULT
(E)	EXTERNAL ELECTRIC OUTLET	(WV47)	WATER VALVE VAULT
(M)	MANHOLE (UNMARKED)	(WV48)	WATER VALVE VAULT
(C)	COMBINATION MANHOLE	(WV49)	WATER VALVE VAULT
(S)	SANITARY MANHOLE	(WV50)	WATER VALVE VAULT
(SC)	SANITARY CLEANOUT	(WV51)	WATER VALVE VAULT
(LS)	LIFT STATION	(WV52)	WATER VALVE VAULT
(CB)	CATCH BASIN	(WV53)	WATER VALVE VAULT
(SI)	STORM INLET (ROUND)	(WV54)	WATER VALVE VAULT
(SIQ)	STORM INLET (SQUARE)	(WV55)	WATER VALVE VAULT
(SIB)	STORM INLET (BEEHIVE)	(WV56)	WATER VALVE VAULT
(C)	CURB INLET	(WV57)	WATER VALVE VAULT
(FES)	FLARED END SECTION	(WV58)	WATER VALVE VAULT
(D)	DOWNSPOUT (INTO GROUND)	(WV59)	WATER VALVE VAULT
(WV)	WATER VALVE VAULT	(WV60)	WATER VALVE VAULT
(FH)	FIRE HYDRANT	(WV61)	WATER VALVE VAULT
(WV6)	WATER VALVE VAULT	(WV62)	WATER VALVE VAULT
(WV7)	WATER VALVE VAULT	(WV63)	WATER VALVE VAULT
(WV8)	WATER VALVE VAULT	(WV64)	WATER VALVE VAULT
(WV9)	WATER VALVE VAULT	(WV65)	WATER VALVE VAULT
(WV10)	WATER VALVE VAULT	(WV66)	WATER VALVE VAULT
(WV11)	WATER VALVE VAULT	(WV67)	WATER VALVE VAULT
(WV12)	WATER VALVE VAULT	(WV68)	WATER VALVE VAULT
(WV13)	WATER VALVE VAULT	(WV69)	WATER VALVE VAULT
(WV14)	WATER VALVE VAULT	(WV70)	WATER VALVE VAULT
(WV15)	WATER VALVE VAULT	(WV71)	WATER VALVE VAULT
(WV16)	WATER VALVE VAULT	(WV72)	WATER VALVE VAULT
(WV17)	WATER VALVE VAULT	(WV73)	WATER VALVE VAULT
(WV18)	WATER VALVE VAULT	(WV74)	WATER VALVE VAULT
(WV19)	WATER VALVE VAULT	(WV75)	WATER VALVE VAULT
(WV20)	WATER VALVE VAULT	(WV76)	WATER VALVE VAULT
(WV21)	WATER VALVE VAULT	(WV77)	WATER VALVE VAULT
(WV22)	WATER VALVE VAULT	(WV78)	WATER VALVE VAULT
(WV23)	WATER VALVE VAULT	(WV79)	WATER VALVE VAULT
(WV24)	WATER VALVE VAULT	(WV80)	WATER VALVE VAULT
(WV25)	WATER VALVE VAULT	(WV81)	WATER VALVE VAULT
(WV26)	WATER VALVE VAULT	(WV82)	WATER VALVE VAULT
(WV27)	WATER VALVE VAULT	(WV83)	WATER VALVE VAULT
(WV28)	WATER VALVE VAULT	(WV84)	WATER VALVE VAULT
(WV29)	WATER VALVE VAULT	(WV85)	WATER VALVE VAULT
(WV30)	WATER VALVE VAULT	(WV86)	WATER VALVE VAULT
(WV31)	WATER VALVE VAULT	(WV87)	WATER VALVE VAULT
(WV32)	WATER VALVE VAULT	(WV88)	WATER VALVE VAULT
(WV33)	WATER VALVE VAULT	(WV89)	WATER VALVE VAULT
(WV34)	WATER VALVE VAULT	(WV90)	WATER VALVE VAULT
(WV35)	WATER VALVE VAULT	(WV91)	WATER VALVE VAULT
(WV36)	WATER VALVE VAULT	(WV92)	WATER VALVE VAULT
(WV37)	WATER VALVE VAULT	(WV93)	WATER VALVE VAULT
(WV38)	WATER VALVE VAULT	(WV94)	WATER VALVE VAULT
(WV39)	WATER VALVE VAULT	(WV95)	WATER VALVE VAULT
(WV40)	WATER VALVE VAULT	(WV96)	WATER VALVE VAULT
(WV41)	WATER VALVE VAULT	(WV97)	WATER VALVE VAULT
(WV42)	WATER VALVE VAULT	(WV98)	WATER VALVE VAULT
(WV43)	WATER VALVE VAULT	(WV99)	WATER VALVE VAULT
(WV44)	WATER VALVE VAULT	(WV100)	WATER VALVE VAULT

CITY OF CHICAGO BENCHMARKS REFERENCED:
 BM 403: COPPER POINT IN CONCRETE SHAFT LOCATED 9.8' EAST OF THE WEST LINE OF PARKSIDE AVE. & 182' NORTH OF THE NORTH LINE OF CHICAGO AVE.
 ELEVATION: 39.38'
 BM 345: COPPER POINT IN CONCRETE SHAFT LOCATED 9.5' NORTH OF THE SOUTH LINE OF FERDINAND ST. & 61.3' EAST OF THE EAST LINE OF LARAMIE AVE. (HELD)
 ELEVATION: 29.90'
 BM 578: COPPER POINT IN CONCRETE SHAFT LOCATED 11.0' NORTH OF THE SOUTH LINE OF W. LAKE ST. & 74.0' EAST OF THE EASTLINE OF N. AUSTIN BLVD.
 ELEVATION: 38.43'
 SITE BENCHMARK 1:
 CROSS CUT IN CONCRETE SIDEWALK, LOCATED AT THE NORTHWEST CORNER OF THE INTERSECTION OF N PARKSIDE AVE. & W. OHIO AVE., AS SHOWN HEREON.
 ELEVATION: 38.94'
 SITE BENCHMARK 2:
 CROSS CUT IN CONCRETE SIDEWALK, LOCATED AT THE NORTHWEST CORNER OF THE INTERSECTION OF N PARKSIDE AVE. & W. OHIO AVE., AS SHOWN HEREON.
 ELEVATION: 38.75'

SURVEY RELATED SCHEDULE B-41 ITEMS:
 10. ENCROACHMENT OF FENCES ON INSURED PREMISES OVER THE NORTH, EAST AND WEST LOT LINES, AND REFERENCED ON SURVEY PREPARED BY PROFESSIONAL LAND SURVEYING, INC. DESIGNATED AS JOB NO. 1816490.
 SHOWN HEREON.
 ITEMS 1-9 & 11-22 ARE NOT PLOTTABLE.

- SURVEYORS NOTES:
- REFER TO YOUR DEED, TITLE POLICY AND LOCAL ZONING ORDINANCE FOR BUILDING LINES, EASEMENTS AND OTHER RESTRICTIONS AND COVENANTS NOT SHOWN HEREON.
 - ALL DIMENSIONS ARE IN FEET AND DECIMAL PARTS THEREOF.
 - REVIEW LEGAL DESCRIPTION AND RECORD MEASUREMENT ON THIS PLAT AND AT ONCE REPORT ANY DIFFERENCE TO THE SURVEYOR BEFORE ANY DAMAGE IS DONE AND COMPARE ALL POINTS BEFORE BUILDING BY SAME.
 - NO MEASUREMENTS ARE TO BE ASSUMED BY SCALING.
 - DATE OF BEARING SHOWN HEREON, IS IN REFERENCE TO THE NORTH AMERICAN DATUM 1983, ILLINOIS EAST ZONE.
 - UTILITIES WERE MARKED BY DIGGER PRIOR TO SITE FIELDWORK FOR SURVEYOR (CONTACT DIGGER AT 1-312-774-7000 FOR EXACT LOCATION OF BURIED CABLES (ELECTRIC, TELEPHONE, GAS, SEWER, WATER AND CABLE TV) PRIOR TO DIGGINGS)
 - TO ENSURE LEGITIMACY OF THIS PLAT, IT MUST CARRY THE SEAL OF THE DESIGN FIRM OR PROFESSIONAL LICENSEE, WHO PREPARED THIS PLAT.
 - TITLE COMMITMENT FILE NO. 213044 VERSION 5, PREPARED BY TITLE SERVICES (MIDWEST LLC) WITH COMMITMENT DATE OF SEPTEMBER 15, 2021, WAS REVIEWED FOR THIS SURVEY.
 - THE PROPERTY DESCRIBED HEREON IS THE SAME AS PROPERTY DESCRIBED IN SAID COMMITMENT AND THAT ALL EASEMENTS, COVENANTS AND RESTRICTIONS REFERENCED IN SAID TITLE COMMITMENT OR APPARENT FROM A PHYSICAL INSPECTION OF THE SITE OR OTHERWISE KNOWN TO ME HAVE BEEN PLOTTED HEREON OR OTHERWISE NOTED AS TO THEIR EFFECT ON THE SUBJECT PROPERTY.
 - SUBJECT PROPERTY HAS ACCESS TO NORTH PARKSIDE AVENUE & WEST OHIO STREET, AS SHOWN GRAPHICALLY.
 - PARKING STALLS
 30 TOTAL SPACES
 28 STANDARD SPACES
 2 HANDICAPPED SPACES

STATE OF ILLINOIS
 COUNTY OF DU PAGE

THIS IS TO CERTIFY THAT THIS MAP OR PLAT AND THE SURVEY ON WHICH IT IS BASED WERE MADE IN ACCORDANCE WITH THE 2021 MINIMUM STANDARD DETAIL REQUIREMENTS FOR ALTA/NSPS LAND TITLE SURVEYS, JOINTLY ESTABLISHED AND ADOPTED BY ALTA AND NSPS, AND INCLUDES ITEMS 1, 2, 4, 5, 7(a), (b)(c), 8, 9, 11(b), 19, AND 20, INCLUSIVELY OF TABLE A THEREOF.

THE FIELD WORK WAS COMPLETED ON 02/01/2024.
 DATE OF PLAT OR MAP: 11/8/2023

BY: **DRAFT**
 ILLINOIS PROFESSIONAL LAND SURVEYOR NO. 35-004017
 ILLINOIS PROFESSIONAL DESIGN FIRM NO. 184.008811-0008

© 2023 PI SURVEYING PLLC - ALL RIGHTS RESERVED.

Pi Surveying PLLC
 LAND SURVEYORS
 903 COMMERCE DRIVE, SUITE 210, OAK BROOK, IL 60523
 PHONE: (773) 444-0445 www.pisurveying.com

NO.	DATE	DESCRIPTION

ADDRESS: 535 NORTH PARKSIDE, CHICAGO, ILLINOIS 60644
 FIELD BY: CDJ/SJM DRAWN BY: CJD CHECKED BY: WAW
 FILE NUMBER: 123-1424
 ORDERED BY: SAMPLE
 CATEGORY: ALTA/NSPS LAND TITLE SURVEY